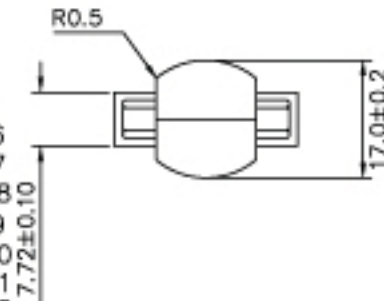


| DVI29F | DVI29F | DVI29F |
|--------|--------|--------|
| 1 | 1 | 16 |
| 2 | 2 | 17 |
| 3 | 3 | 18 |
| 4 | 4 | 19 |
| 5 | 5 | 20 |
| 6 | 6 | 21 |
| 7 | 7 | 22 |
| 8 | 8 | 23 |
| 9 | 9 | 24 |
| 10 | 10 | C1 |
| 11 | 11 | C2 |
| 12 | 12 | C3 |
| 13 | 13 | C4 |
| 14 | 14 | C5 |
| 15 | SHELL | SHELL |



NOTE1.CONTACT FINISH
CONTACT AREA:GOLD OVER NICKEL PLATED(GOLD:0.1 μm MIN)
TERMINAL AREA:TIN-LEAD PLATED

- ELECTRICAL
 - RATED:1.5A 40V (AC)
 - CONTACT RESISTANCE:50mΩ MAXIMUM.
 - INSULATION RESISTANCE:1000MΩ MINIMUM.
 - DIELECTRIC WITHSTANDING VOLTAGE:500V.
- MATERIAL
 - HOUSING;HIGH TEMPERATURE THERMPLASTIC UL94V-0. (IVORY,BLACK)
 - CONTACT:PHOSPHOR BRONZE,GOLD OVER NICKEL PLATED
 - FINISH:TIN-LEAD PLATED
 - FORE SHELL:STEEL NICKEL PLATED
 - INSULATOR COLOR:WHITE,BLACK

E09-DF-DF

— SHOWN COLOR



| TOLERANCE | | | Winston International | |
|-----------|------|---------------------------------------|-----------------------|----------|
| INCHES | M/M | SCALE | NONE | REV A |
| .X | .015 | .30 | UNIT | |
| .XX | .010 | .10 | SHEET | 1/1 |
| .XXX | .005 | .05 | DATE | 12/05/03 |
| DRAWN BY | | TITLE: DVI 24+5F TO DVI 24+5F ADAPTER | | |
| CHECK BY | | PART NO. 90-111-DVI-D | | |
| APPD BY | | | | |