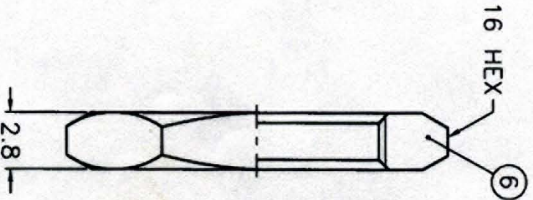
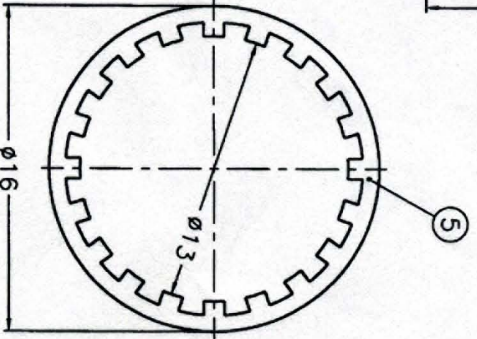
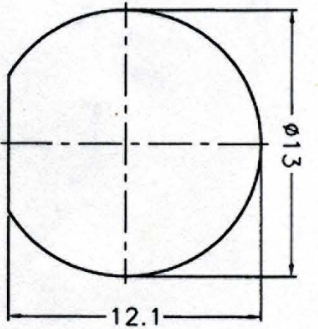
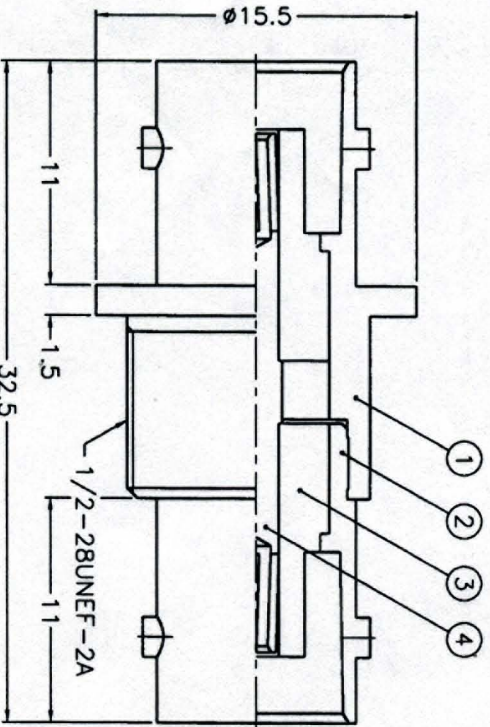


ISS	ZONE	DESCRIPTION \ PER REQUEST \ DATE



- NOTES: FINISH (PLATING THICKNESS IN MICRO-INCHES)
1. BRASS PER QQ-B-626
 2. BRASS PER QQ-B-613
 3. NICKEL PL. 100 MIN. THICK OVER COPPER STRIKE
 4. PHOSPHOR BRONZE PER QQ-B-750
 5. GOLD PL. 3 MIN. THICK OVER NICKEL PL. 100 MIN. THICK OVER COPPER STRIKE

NO.	DESCRIPTION	MATERIAL	FINISH	QTY	DRAWING NO.
1	HEX NUT	NOTE 1	NOTE 3	1	HN16-1/2-28X2.8
2	LOCK WASHER	NOTE 2	NOTE 3	1	LW-16/13X0.5
3	CONTACT PIN	NOTE 4	NOTE 5	1	B7900-4
4	INSULATOR	DELRI	NATURAL	2	B7996Z2-3-50
5	BODY	NOTE 1	NOTE 3	1	B74000-2
6	HOUSING	NOTE 1	NOTE 3	1	B7915-1-A

DIMENSIONS ARE IN MILLIMETERS
UNLESS OTHERWISE SPECIFIED

TOLERANCES
0.5-6 = ±0.2
6-30 = ±0.4
30-120 = ±0.6
120-315 = ±1
315-1000 = ±1.6
1000-2000 = ±2.4

SCALE	3/1	ISSUE	A

PART NO.	APPROVED	DATE	CHECKED	DATE	DRAWN	DATE
		05-18-99'		05-18-99'		05-18-99'

200 Hillsboro Street Office: 919-693-1561
WELTRON
 Oxford, NC 27565
 TITLE: BNC FEMALE TO FEMALE BULKHEAD ADAPTOR
 DRAWING NO. 44-253
 FILE NO. F:\DWG\B747181\50\ND3G

B7915-1-A